

Distinctive Features of JETTER

1 Automatic Sheet Recovery

JT-1 JT-1T JT-2T

Even the sheet gets off the rails, it can be automatically returned to the rails when the sheet ascending and returns to normal operation.



2 Reverse Ascending

JT-1 JT-1T JT-2T

In case the descending sheet contacts an object or a person, it reverses and ascends. This action contributes to reduction of impact to the object or the person.



3 Easy emergency evacuation

JT-1 JT-1T JT-2T

The sheet can be easily removed from the rail for immediate evacuation in the case of emergency.



4 Compact design for effective space use

JT-1 JT-1T

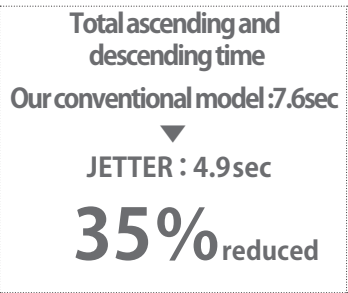
With the compact sheet drum box, this design offers maximized use of effective opening dimensions even in the limited space. This model is recommended for entrances of factories, shops and warehouses. By putting control board inside the drum box and by placing control panel, safety sensor inside the rail, drastic reduction in installation space and wiring achieved. (only the model JT-1 in built-in type)



5 High-speed ascending and descending

JT-1 JT-1T

By improving "Slow-Start & Slow-Stop" function, the total time needed for opening and closing shortened by 35%.



※In case the opening dimension of W3000mm X H3000mm

6 Maximum opening dimensions can be secured

JT-1 JT-1T JT-2T

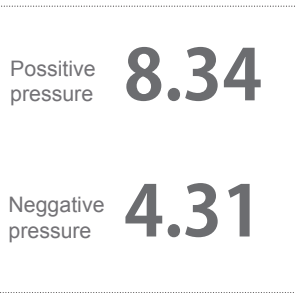
Minimized the maintenance space to be able to largely get opening more, as 20mm each in the left and right side for the model JT-1 and 20mm in the left/150mm in the right for the models JT-1T & JT-2T.

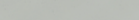

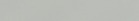







7 High Air tightness

JT-1 JT-1T JT-2T

Air leak volume at 10Pa
($\text{m}^3/\text{h} \cdot \text{m}^2$)
With High Airtight Option



Main body						
	Colored steel plate (Ivory)	Stainless plate (304HL)				
Sheet						
	Flame retardant (Transparent)	Flame retardant (Insects-proof orange)	Anti-static and Flame retardant (Transparent)	Anti-static and Flame retardant (Insects-proof orange)	Special mesh window material Mesh1003	Special mesh window material Mesh1004

Option

Sensors	Infrared Sensor	Infrared Sensor	Infrared Sensor
Models	DA-4700	OA-203C*	OA-4700S
Outside dimension (mm)	W265×H61×D37.5	W221×H63×D29.9	W267×H62×D45
Power supply	AC/DC12~24V	AC/DC12~30V	AC/DC12~24V
Switches	Wireless remote control (1-key type / 3-key type)	String Switch	Single pushbutton
Models	Receiver:RX113-1143 Transmitter:TX16-1111	—	WBSTT 221 ON
Outside dimension (mm)	W35×H60×D12.8 (Transmitter)	W140×H154×D33 (Main Body)	W60×H98×D47.5
Power supply	DC12~24V	—	—

※In case of the effective width in W 4300mm or more, the sheet hanging dimensions in the center part and both end parts may differ.
※ Notice: Keep the door (sheet) open when the unit is not in use. Sheet might be off the rails due to rapid wind.

Others

- Backup power system
- Dormer-window
- Orange color bottom sheet
- HACCP cover
- Motor on the left (JT-1T, JT-2T)
- Airtight gasket

Indoor Use Pipe-less Roll-up Door



Automatic sheet recovery & Reverse ascending functions achieved



UNIFLOW CO.,LTD. URL <http://www.uniflow.co.jp>
HEAD OFFICE
BR GOTANDA Bldg., 30-4,Nishigotanda 2-chome,Shinagawaku,Tokyo 141-0031 JAPAN
TEL(81)3-5719-6700 FAX(81)3-5719-6699

- Due to the properties of printing ink, the color of the product may differ from the actual color.
- The specifications are subject to change without notice for improvements.



Further Ecology,
Safety and
Usability sought.

Indoor Use Pipe-less Roll-up Door



- JT-1Built-in control box
- JT-1TExternal control box
- JT-2TExternal control box

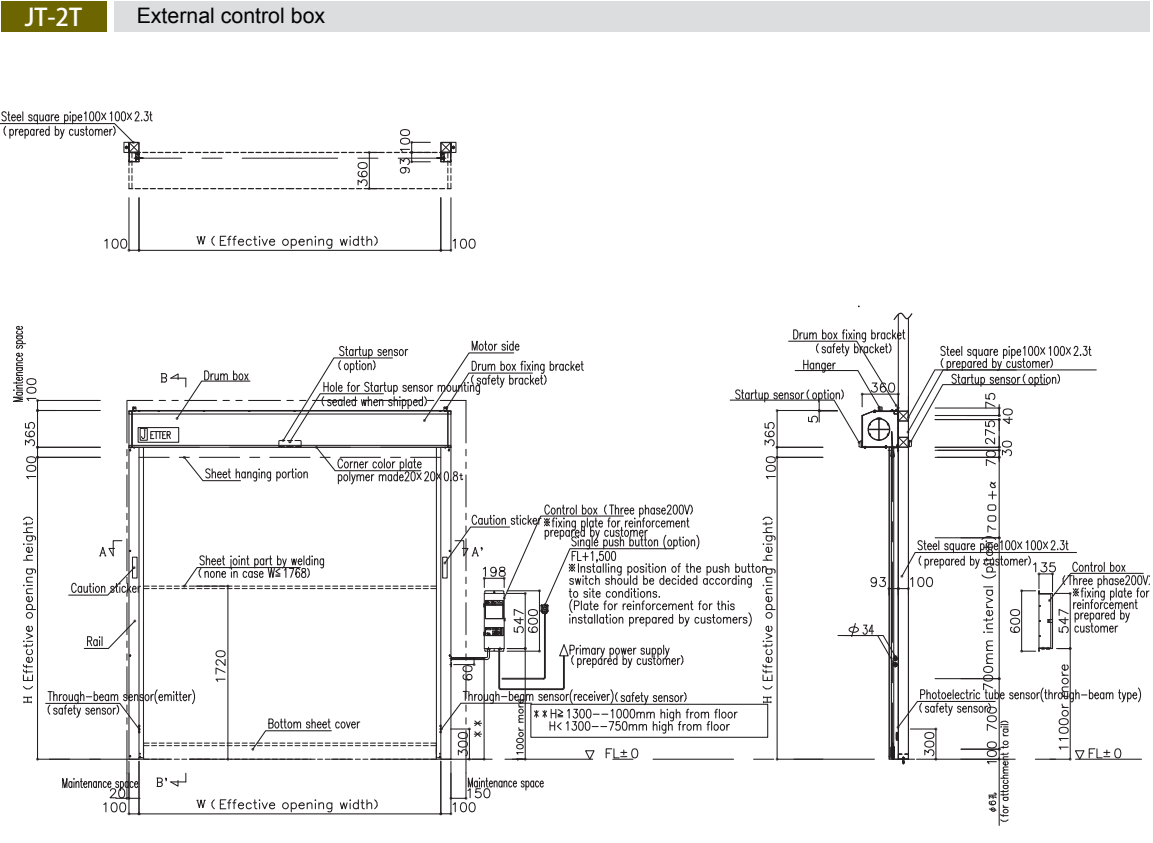
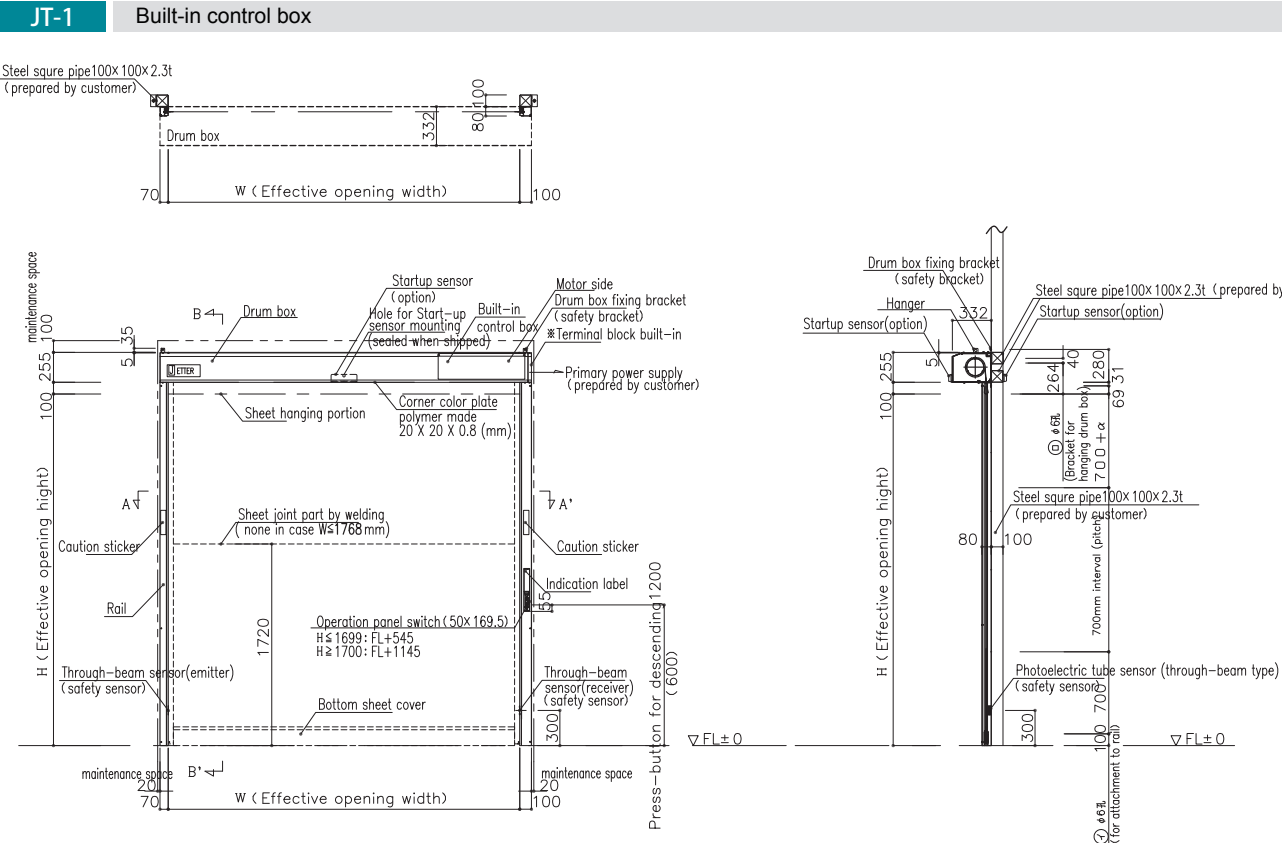
JETTER, the Pipe-less Roll-up Door with Reverse Ascending and Automatic Sheet Recovery functions.

This Model detects objects contacted to descending sheet and makes Reverse Ascending. Even the sheet gets off the rails, it can be automatically returned to the right position. Safe Pipe-less design for less chances for damaging the sheet. The operational noise reduced as well.



Achieved space-saving and wiring-saving smart by the control board built in the sheet drum box.

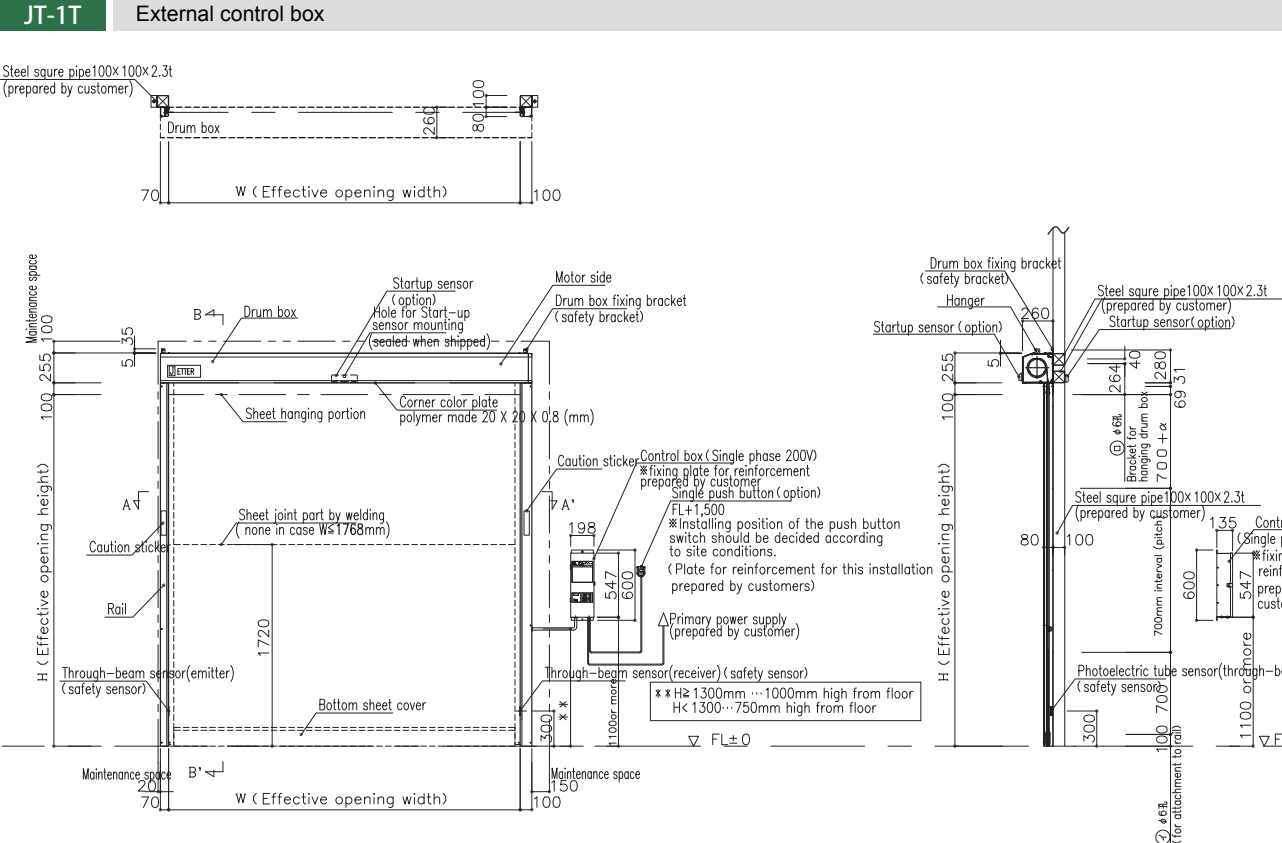
Dimension



Model with the control board box installed outside. Choose according to conditions and environment for installation.



Possible to manufacture with the size up to 4500mm for both width and height freely, that enables to use for bigger opening.



Specifications

		JETTER		
		JT-1	JT-1T	JT-2T
Pipe-less 【Indoor Use】				
Main body	Effective opening regulation W/H (mm)	W900～3500 H900～3000		W1000～4500 H 1000～4500
	Control box	【Built-in】 D332×H255	【External】 D260×H255	【External】 D360×H365
	Rail	W70 (left)・100 (right)×D80		
	Maintenance space	left20 right20 Above drum box100	left20 right150 Above drum box100	
Drive/ Control	Motor Output	0.4KW		0.75KW
	Location of control board	To be externally installed		
	Sheet speed ※	Ascending 2.0m/sec	Descending 1.7m/sec	Ascending 1.5m/sec Descending 0.7m/sec
	Allowable frequency	150times/h or less		
Power supply		Single phase 200V±10% (50/60Hz)		Three phase 200V±10% (50/60Hz)
		5A or below		6A or below
Sheet	Sheet	Polyester yarn encapsuled vinyl sheet		
Other features	Safety sensor	Phototube sensor (Photo transmitting / photo receiving type)		
Ambient temperature / humidity		5～40℃ / 20～85%(There should be no freezing or condensation)		

※Maximum speed